

# The Bradshaw

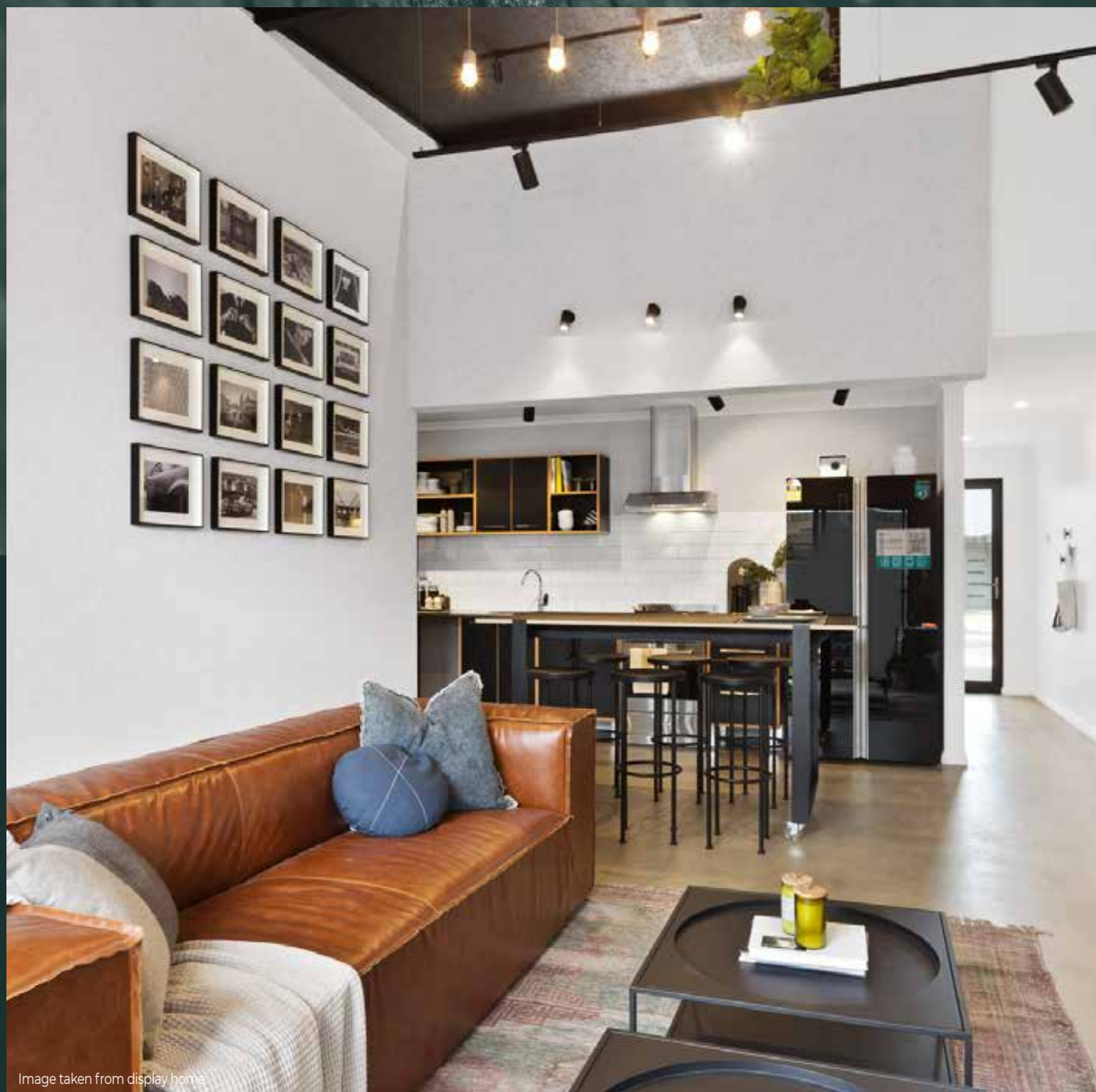
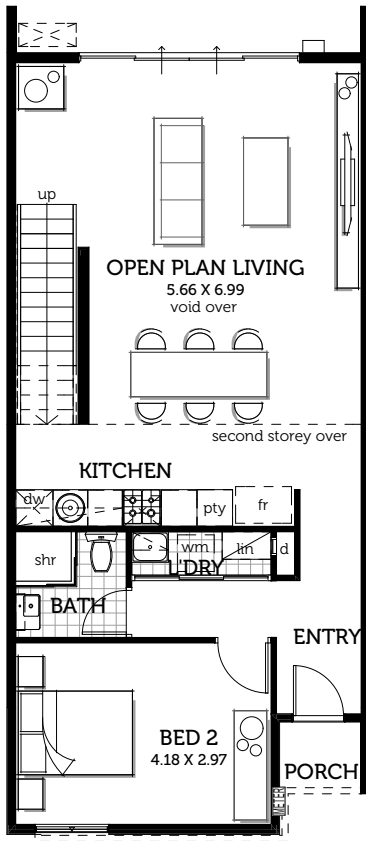


Image taken from display home

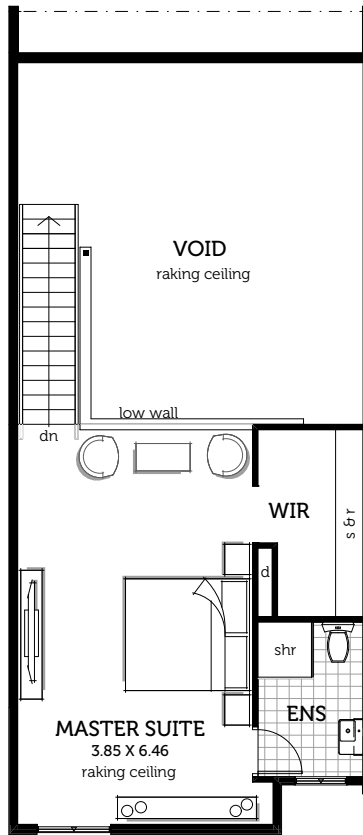
LET'S CHAT —

# The Bradshaw

FIRST STOREY



SECOND STOREY



## THE FEATURES —

- Industrial concrete floors throughout ground floor
- Outrageously high ceilings
- Mezzanine floors with two storey void
- Stylish open tread staircase
- Feature exposed beams
- Designer kitchens uniquely styled for the Brownstones, including stone tops

- 2 Bedrooms
- 2 Bathrooms
- 2 Car
- 6m - 7.5m

**STYLE TIPS —** Add touches of steel, recycled timbers and a neutral colour palette to complete the look of this uber cool NY vibe home.

**Express Living**  
HOMES